



Egypt, L'Arche al Fulk
Hani Zaki Habeeb



Canada, L'Arche Daybreak
Tom Krysiak



U.S.A., L'Arche Syracuse
Bradford Smith



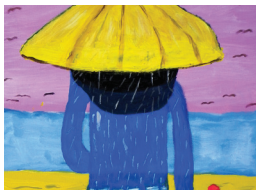
Burkina Faso, L'Arche Nonga
Maasem, Rouama Kouka Gildas



France, L'Arche L'Olivier
Nicole La France



Slovenia, L'Arche Društvo
Barka, Slavko Škerl



Argentina, L'Arche Buenos Aires,
Elizabeth Pereyra



Australia, L'Arche Brisbane
Andrew Pemberton



Haiti, L'Arche Carrefour
Ismael Charles



Belgium, L'Arche Antwerpen
Chris Verbert



Jean Vanier with artist Kim Lageer

THE INTERNATIONAL FEDERATION OF L'ARCHE

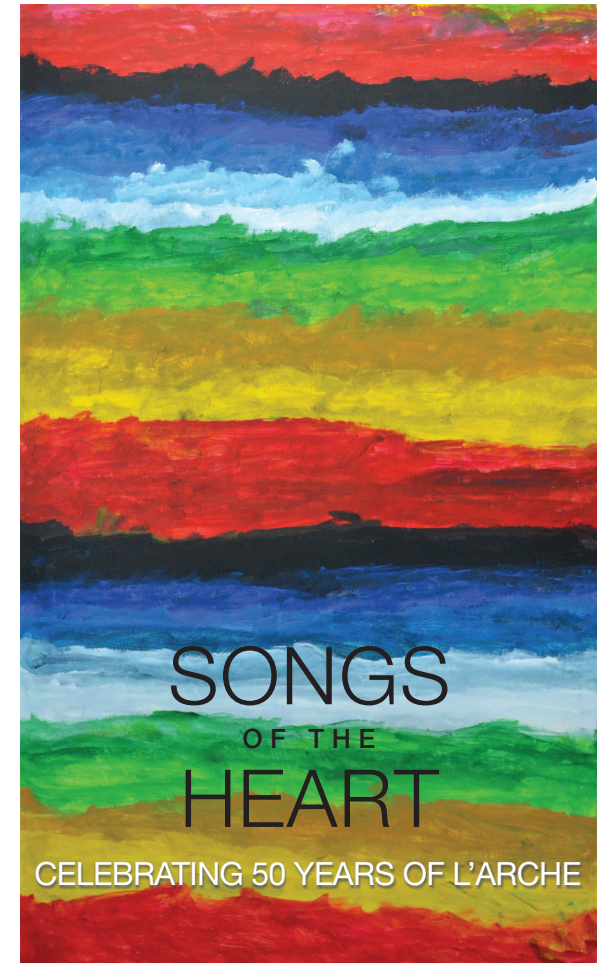
Founded by Jean Vanier in France in 1964, L'Arche is an international movement of 146 communities in 35 countries where people with intellectual disabilities and those who care for them live, work and learn together. L'Arche is a unique vision of care giving and community building that fosters inclusion, understanding and belonging. In communities of diverse cultures, religions and backgrounds, deeply committed mutual relationships are shared with people with developmental disabilities.

Can we reasonably have a dream of a world where people whatever their race, religion, culture, abilities, or disabilities, whatever their education or economic situation, whatever their age or gender, can find a place and reveal their gifts? Jean Vanier, Founder of L'Arche



L'ARCHE INTERNATIONAL

www.larche.org
www.jean-vanier.org
art.larche.org



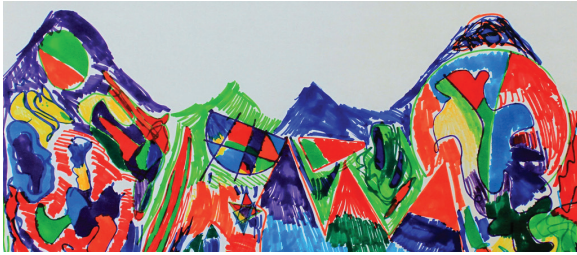
**SONGS
OF THE
HEART**

CELEBRATING 50 YEARS OF L'ARCHE

David Peacock, United Kingdom, L'Arche Edinburgh

**L'Arche International Jubilee
Art Exhibition**

art.larche.org



Canada, L'Arche Maurice, Diane Vincent

THE EXHIBITION

As part of the 2014 Jubilee celebrations, the International Federation of L'Arche presents an On-line Art Exhibition with paintings by people with intellectual disabilities. This art showcases the diverse and visual artistic talents from 146 L'Arche communities worldwide.

From L'Arche's founding in 1964, Jean Vanier emphasized the importance of opportunities for creativity for the people welcomed to L'Arche. During the next 50 years many communities created workshops and studios for creative expression in the visual arts.

The L'Arche Jubilee Art On-Line Exhibition is an opportunity to share this gift with the world.

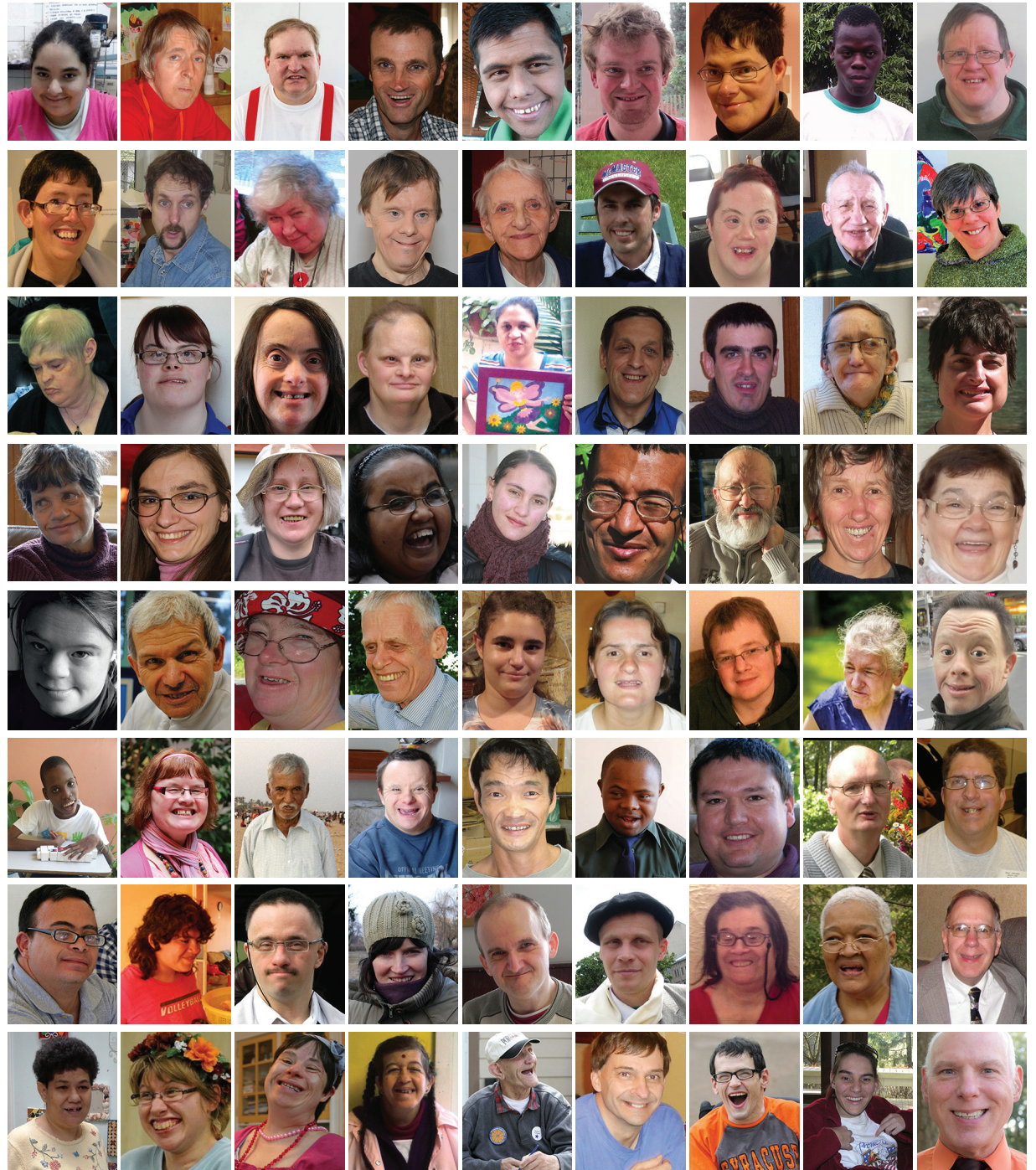
JEAN VANIER

“Congratulations to those members of L'Arche who have done these beautiful paintings. As you look at the paintings look at the people through the paintings. Remember that painting is the song of the heart. What is important is that we contemplate and give thanks for the hearts of these men and women who have beautiful gifts. As we welcome the gift, we are welcoming those people who have done them.”



Bangladesh, L'Arche Mymensingh, Muhammad Munna

THE ARTISTS



VISIT: ART.LARCHE.ORG